



Custom made and high quality
in refrigeration



-  VENUS
-  MERCURY
-  CALLISTO
-  MOON
-  NEPTUNE

SERVICE COUNTER WITH VENTILATED REFRIGERATION SUITABLE FOR DISPLAYING BOTH FRESH AND PACKAGED BUTCHER'S PRODUCTS, CURED MEATS, CHEESE AND DAIRY PRODUCTS.

The display area is made of straight glass and the interior is made of 304 stainless steel, while the materials, finishes and colours of the exterior can be customised to customer requirements.

Available with display shelves in 2 depth sizes [**720 / 900 mm**], customisable in lengths and corner sizes to customer requirements.

Available versions: **Ventilated refrigeration, double glazing.**

Customisation: **Lengths, corners, materials, finishes and colours.**

Can be combined: **with all VENUS and MERCURY models.**

Accessories on request: **Paper holder; Knife holder; Hooks;**

Night covers; Chopping board; Scale holder, and others on request.

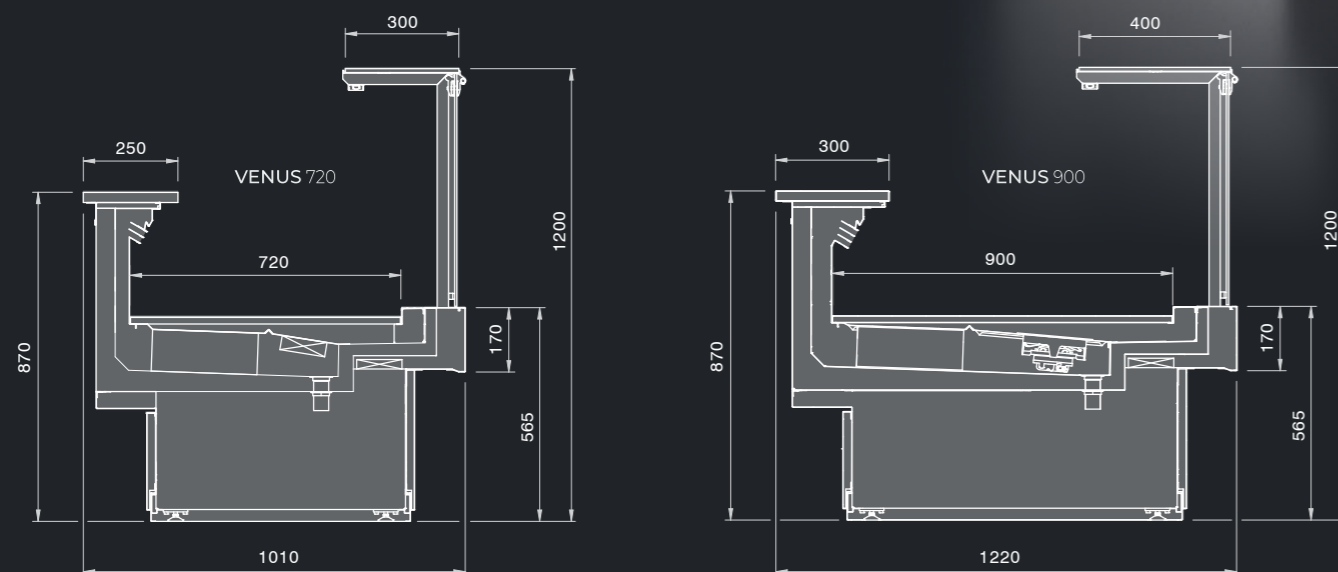
Standard accessories: **Accessory holder profile,**

Anti-fog front ventilation.

Evaporator treatment: **Anti-corrosion cataphoresis.**



IDEAL FOR BUTCHERS, DELICATESSEN, CHEESE AND DAIRY PRODUCTS

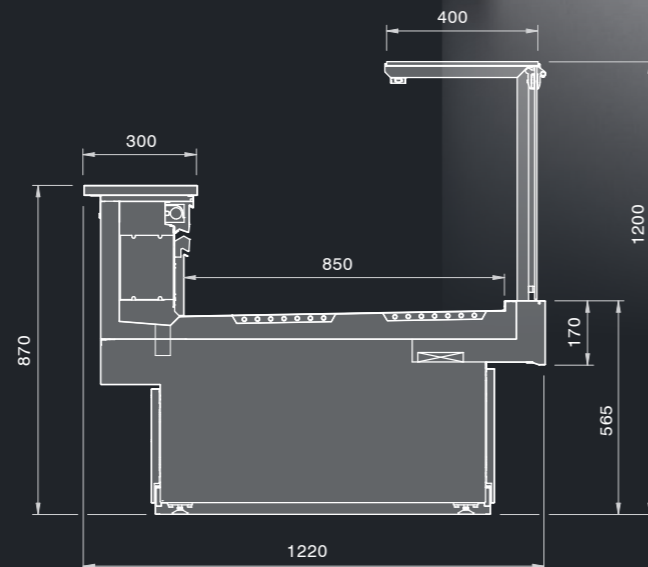


SERVING COUNTER WITH VENTILATED EVAPORATOR REFRIGERATION AND STATIC DISPLAY SURFACE, SUITABLE FOR DISPLAYING FRESH BUTCHER'S PRODUCTS. THE DSV TECHNOLOGY IS ESPECIALLY RECOMMENDED FOR THE DISPLAY OF FRESH MEAT.

The display area with DSV technology [ventilated evaporator + refrigerated bottom] is made of straight glass and the interior is made of 304 stainless steel, while the materials, finishes and colours of the exterior can be customised to customer requirements. It's available with a display surface of **850 mm**, and the lengths and corner sizes can be customised to customer requirements.



Versions: **Refrigeration [DSV] Ventilated evaporator + refrigerated bottom.**
 Customisation: **Lengths, double glazing, corners, materials, finishes and colours.**
 Can be combined: **with all VENUS models.**
 Accessories on request: **Paper holder; Knife holder; Hooks; Night covers; Chopping board; Scale holder, and others on request.**
 Standard accessories: **Accessory holder profile and anti-fog front ventilation.**
 Evaporator treatment: **Anti-corrosion cataphoresis.**
 Defrosting: **Electric defrosting as standard.**



COUNTERS IDEAL FOR BUTCHERS AND FRESH MEAT DISPLAY



**VENTILATED SERVICE COUNTER
WITH DOUBLE-GLAZED DISPLAY
AND REAR SLIDING DOORS.
THIS TOWER IS SUITABLE FOR
A LARGE VERTICAL DISPLAY
OF FRESH AND PREPARED PRODUCTS.**

The display area is made of straight glass and the interior is made of 304 stainless steel, while the materials, finishes and colours of the exterior can be customised to customer requirements.
Available with a display depth of **720 mm**, the lengths and corners can be customised to customer requirements.

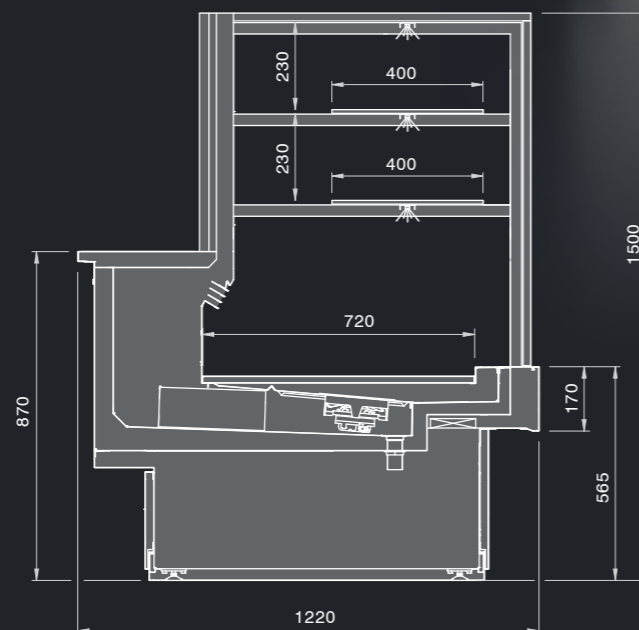


Versions: **Ventilated refrigeration.**

Customisation: **Lengths, materials, finishes and colours.**

Can be combined: **with all VENUS models.**

Evaporator treatment: **Anti-corrosion cataphoresis.**

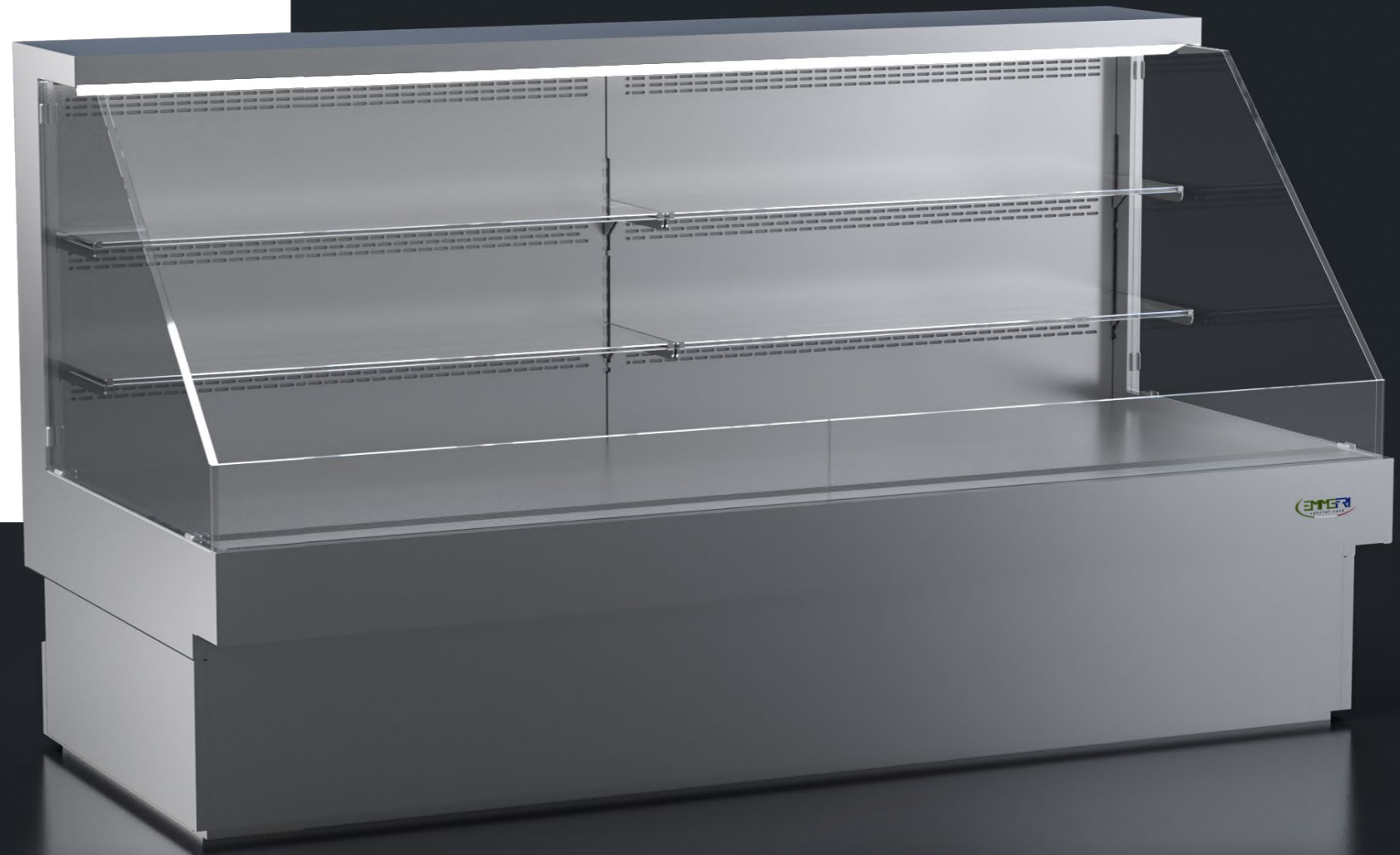


FRESH AND PREPARED PRODUCT VERTICAL DISPLAY COUNTERS



VERTICAL SELF-SERVICE COUNTER WITH VENTILATED REFRIGERATION SUITABLE FOR DISPLAYING PRE-PACKAGED PRODUCTS.

Maximum flexibility, as it is available with display shelves in 2 depth sizes [**720 / 900 mm**] and 3 heights [**1200 / 1400 / 1600 mm**] to adapt to the display requirements of any customers. The inside is in stainless steel, while the materials, finishes and colours of the exterior can be customised to customer requirements. Lengths and corner sizes can also be customised. It can be combined with the VENUS model to create your ideal sales layout in your commercial environment.

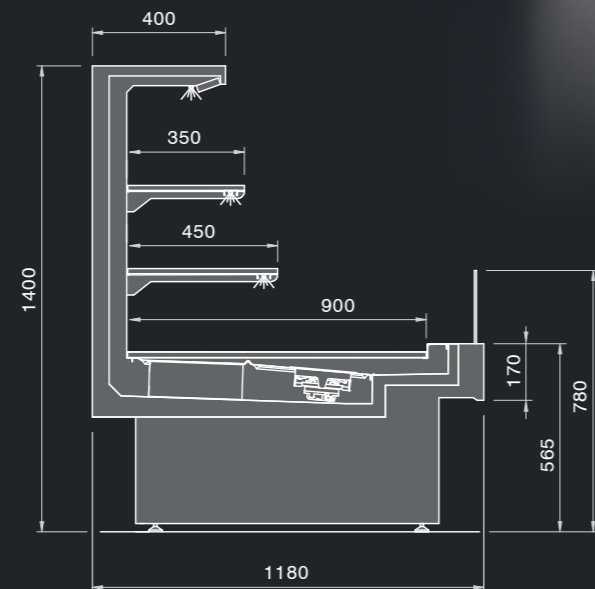


Versions: **Ventilated refrigeration.**

Customisation: **Lengths, corners, materials, finishes and colours.**

Can be combined: **with all VENUS models.**

Evaporator treatment: **Anti-corrosion cataphoresis.**



IDEAL FOR DISPLAYING PRE-PACKAGED PRODUCTS



WALL COUNTER IDEAL AS A BACK COUNTER WITH VENTILATED REFRIGERATION AND IN-TANK EVAPORATOR SUITABLE FOR DISPLAYING CURED MEATS AND CHEESE. IT CAN ALSO BE USED AS A COMPLEMENT IN “GRAB&GO” AREAS FOR DISPLAYING PRE-PACKAGED PRODUCTS AND BEVERAGES.

The inside is in stainless steel, while the materials, finishes and colours of the exterior can be customised to customer requirements. The lengths can be customised to best meet every display and furnishing requirement.

Versions: **Ventilated refrigeration with in-tank evaporator.**

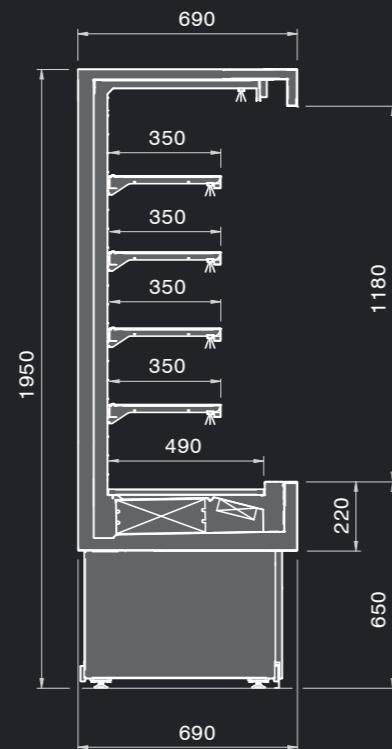
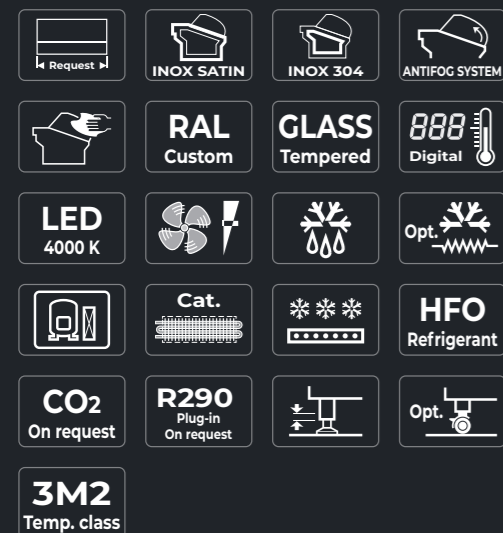
Customisation: **Lengths, materials, finishes and colours.**

Can be combined: **Yes.**

Accessories on request: **Sliding front doors; Single-leaf front doors; 2-leaf front doors; Bars for Cured meats.**

Ventilation: **Low-noise fans.**

Evaporator treatment: **Anti-corrosion cataphoresis.**



 **CALLISTO V1**

WALL COUNTERS FOR CURED MEATS, CHEESE AND “GRAB&GO” AREAS



**WALL COUNTER IDEAL AS BACK COUNTER
WITH VENTILATED REFRIGERATION
AND BACK EVAPORATOR.
SUITABLE FOR DISPLAYING MEAT,
CURED MEATS AND FRESH CHEESE.**

The inside is in stainless steel, while the materials, finishes and colours of the exterior can be customised to customer requirements.
The lengths can be customised to best meet every display and furnishing requirement.

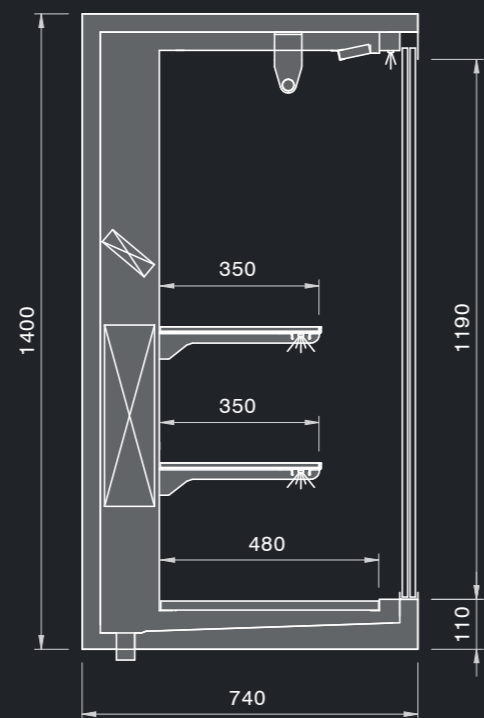
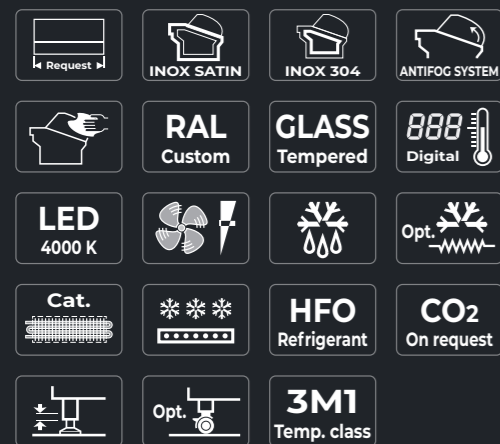
Versions: **Ventilated refrigeration with back evaporator.**

Customisation: **Lengths, materials, finishes and colours.**

Accessories on request: **Sliding front doors; Single-leaf front doors; 2-leaf front doors; Bars for Cured meats.**

Ventilation: **Low-noise fans.**

Evaporator treatment: **Anti-corrosion cataphoresis.**



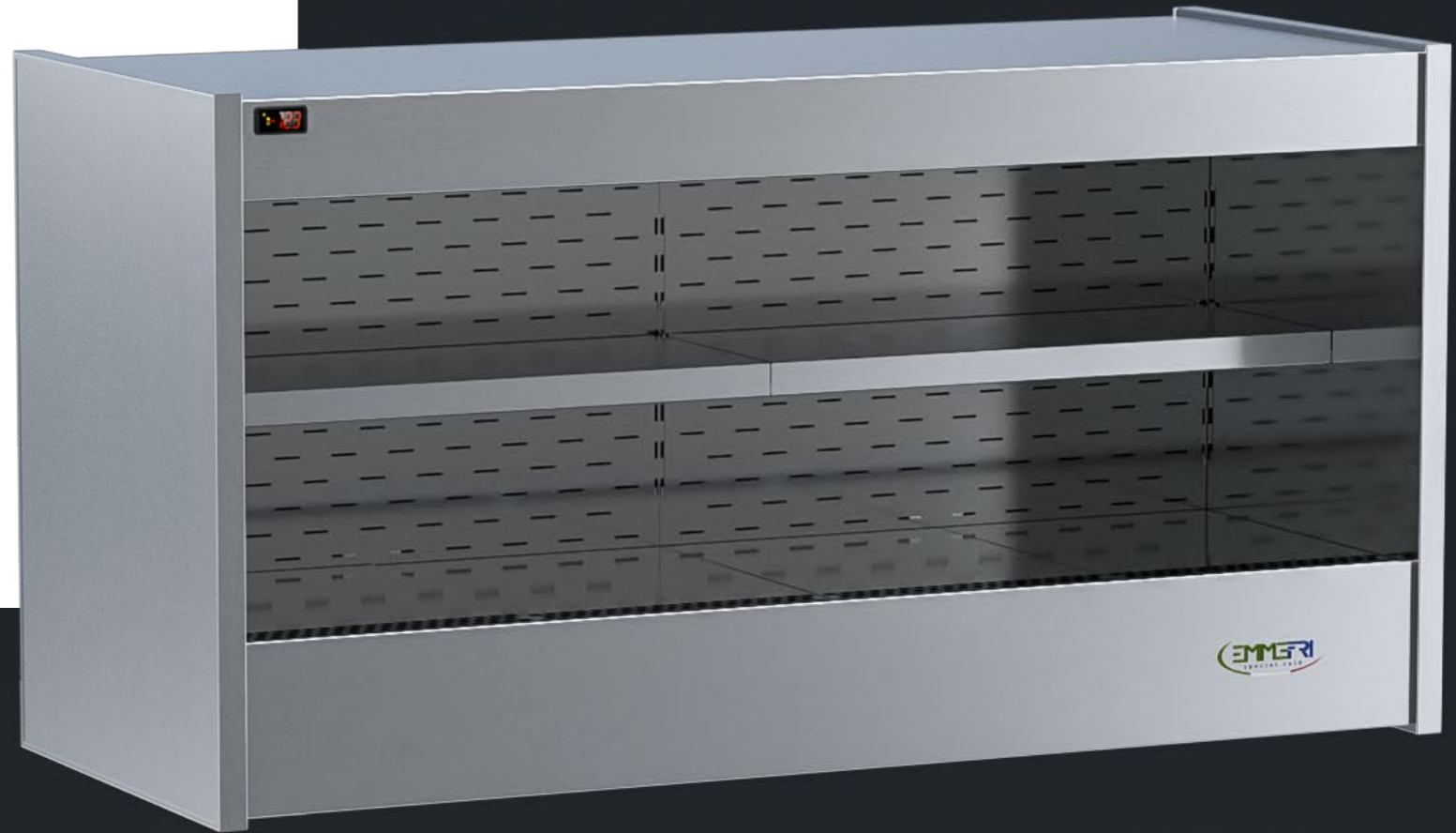
 **CALLISTO V2**

WALL COUNTERS IDEAL FOR MEAT, CURED MEATS AND FRESH CHEESE



**BACK WALL CABINET
WITH VENTILATED REFRIGERATION
WITH IN-TANK EVAPORATOR
SUITABLE FOR THE DISPLAY
OF CURED MEATS, CHEESE
AND DRINKS.**

The interior is in polished stainless steel while the exterior is in satin-finished steel, complete with shoulders and night curtain.
Available in the following lengths:
1000 / 1250 / 1563 / 1875 / 2500 mm.
Wall cabinet suitable for every display and furnishing requirement.



Versions: **Ventilated refrigeration with in-tank evaporator.**

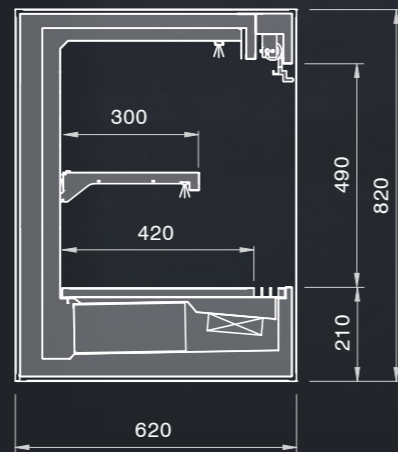
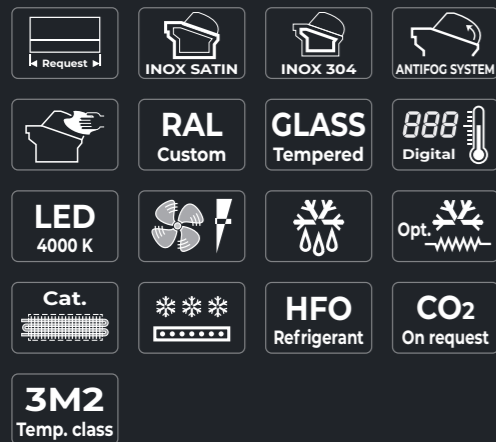
Can be combined: **Yes.**

Accessories on request: **Sliding front doors; Bars for Cured meats;**

Standard accessories: **Shoulders and night curtain.**

Ventilation: **Low-noise fans.**

Evaporator treatment: **Anti-corrosion cataphoresis.**



WALL CABINETS SUITABLE FOR DISPLAYING CURED MEATS, CHEESE AND BEVERAGES



BACK COUNTER WALL CABINET WITH STATIC REFRIGERATION SUITABLE FOR DISPLAYING CURED MEATS, CHEESE AND BEVERAGES.

The interior is in polished stainless steel while the exterior is in satin-finished steel, complete with shoulders and night curtain.
Available in the following lengths:
1000 / 1250 / 1563 / 1875 / 2500 mm.
Wall cabinet suitable for every display and furnishing requirement.



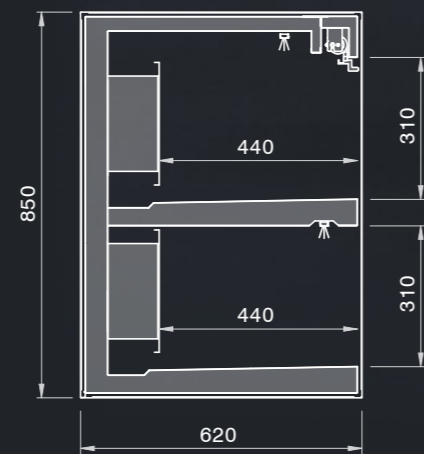
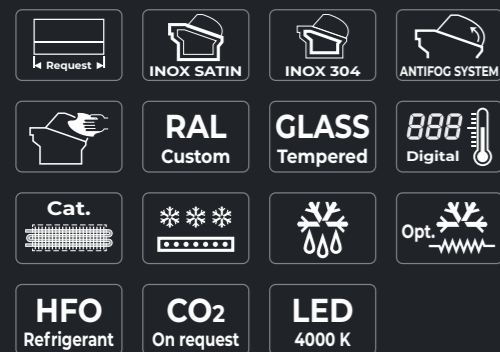
Versions: **Static refrigeration.**

Can be combined: **Yes.**

Accessories on request: **Sliding front doors; Bars for Cured meats;**

Standard accessories: **Shoulders and night curtain.**

Evaporator treatment: **Anti-corrosion cataphoresis.**



WALL CABINETS SUITABLE FOR DISPLAYING CURED MEATS, CHEESE AND WINE

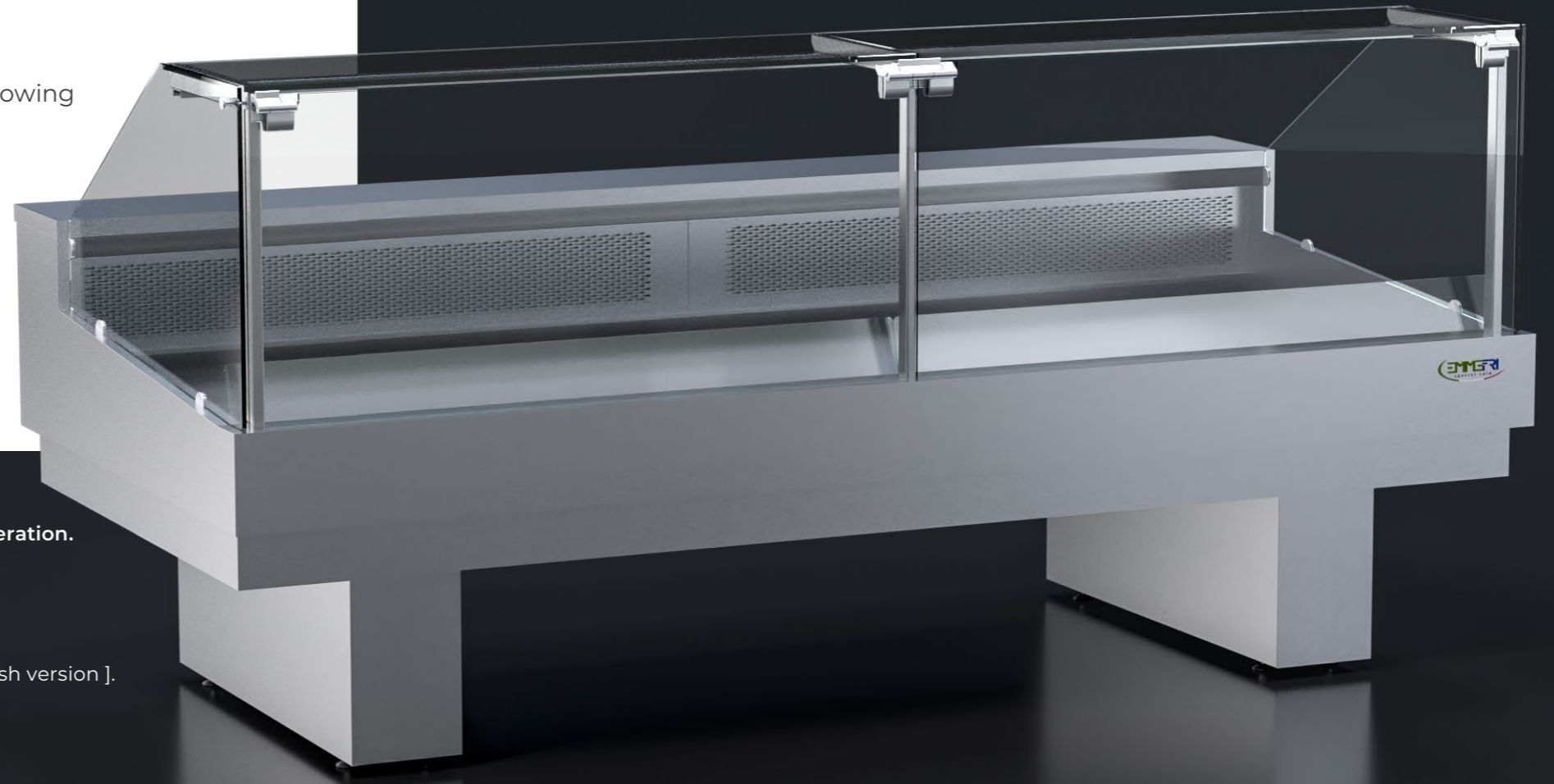


**COUNTER IDEAL FOR DISPLAYING FRESH FISH,
SPECIFICALLY DESIGNED AND MANUFACTURED
WITH MATERIALS AND TECHNIQUES SUITABLE
FOR USE IN THE FISH SECTOR.**

The display area is made of straight glass and is available in the following versions:

- **With ventilated refrigeration** for use with or without ice bed
- **With static evaporator** ideal for displaying shellfish
- **With refrigerated bottom** for use with ice bed
- **Neutral**

The tank is made entirely of welded AISI 316 stainless steel. Customisable length and section to best meet every display and furnishing requirement.



Versions: **Neutral; Static evaporator and refrigerated bottom; Ventilated refrigeration.**

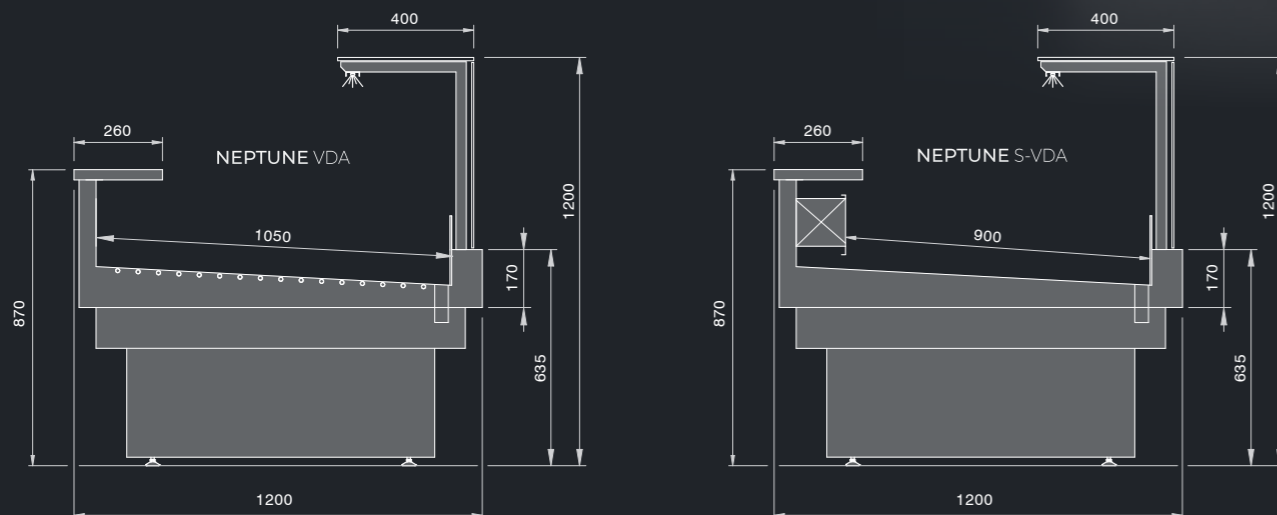
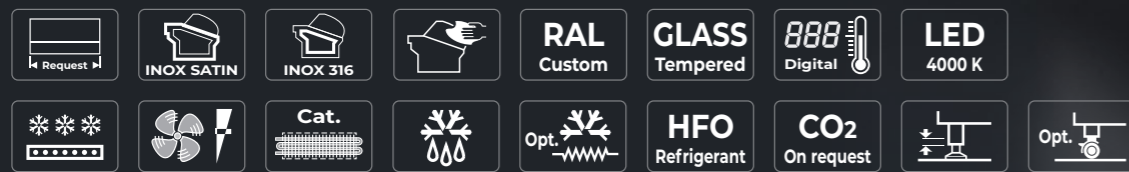
Customisation: **Lengths, section and corner dimensions.**

Can be combined: **Yes.**

Accessories: **A wide range of dedicated accessories is also available.**

Evaporator treatment: **Anti-corrosion cataphoresis** [ventilated and static shellfish version].

Ventilation: **Low-noise fans, IP65 protection class** [ventilated version].



COUNTERS IDEAL FOR DISPLAYING FRESH FISH

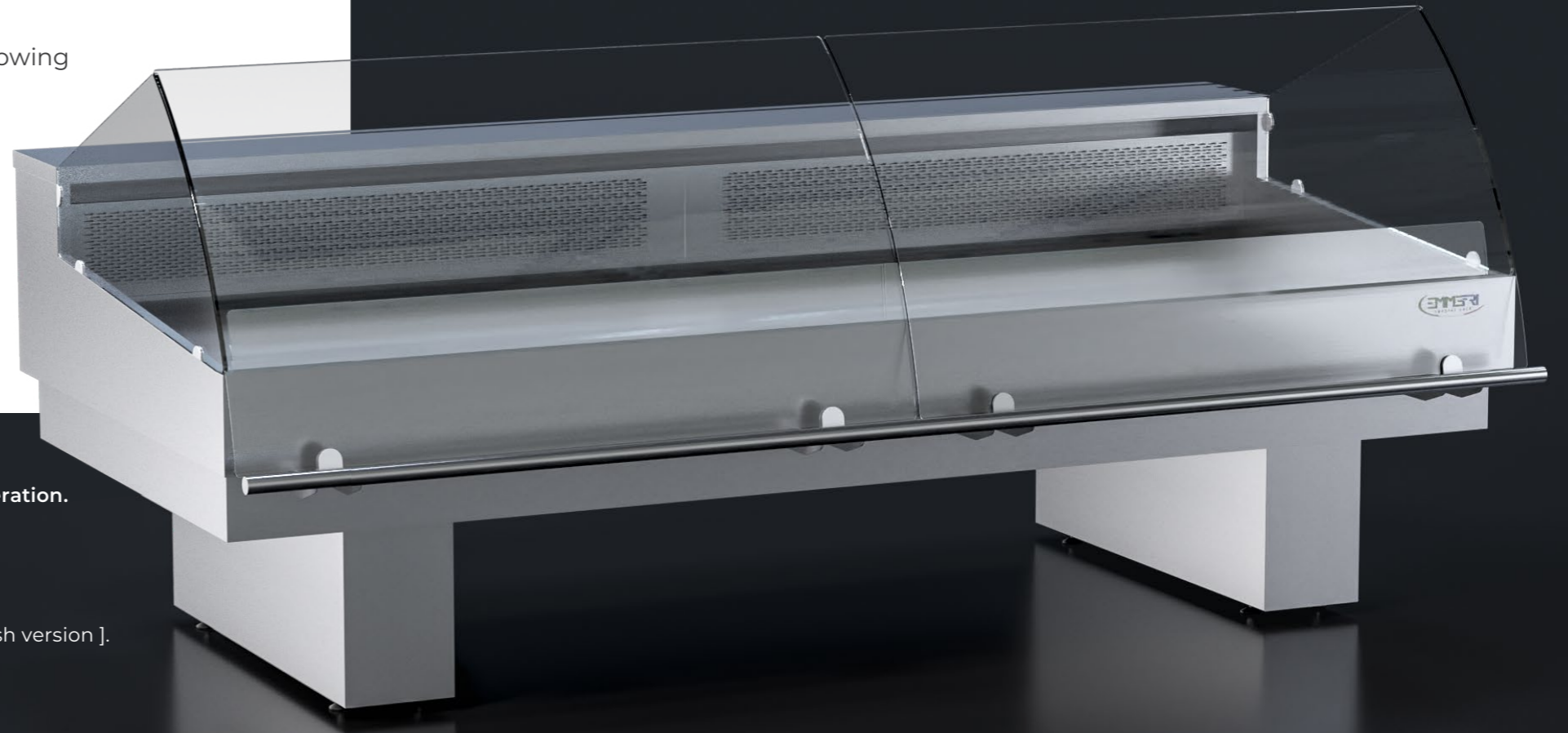


**COUNTER IDEAL FOR DISPLAYING FRESH FISH,
SPECIFICALLY DESIGNED AND MANUFACTURED
WITH MATERIALS AND TECHNIQUES SUITABLE
FOR USE IN THE FISH SECTOR.**

The display area is made of straight glass and is available in the following versions:

- **With ventilated refrigeration** for use with or without ice bed
- **With static evaporator** ideal for displaying shellfish
- **With refrigerated bottom** for use with ice bed
- **Neutral**

The tank is made entirely of welded AISI 316 stainless steel. Customisable length and section to best meet every display and furnishing requirement.



Versions: **Neutral; Static evaporator and refrigerated bottom; Ventilated refrigeration.**

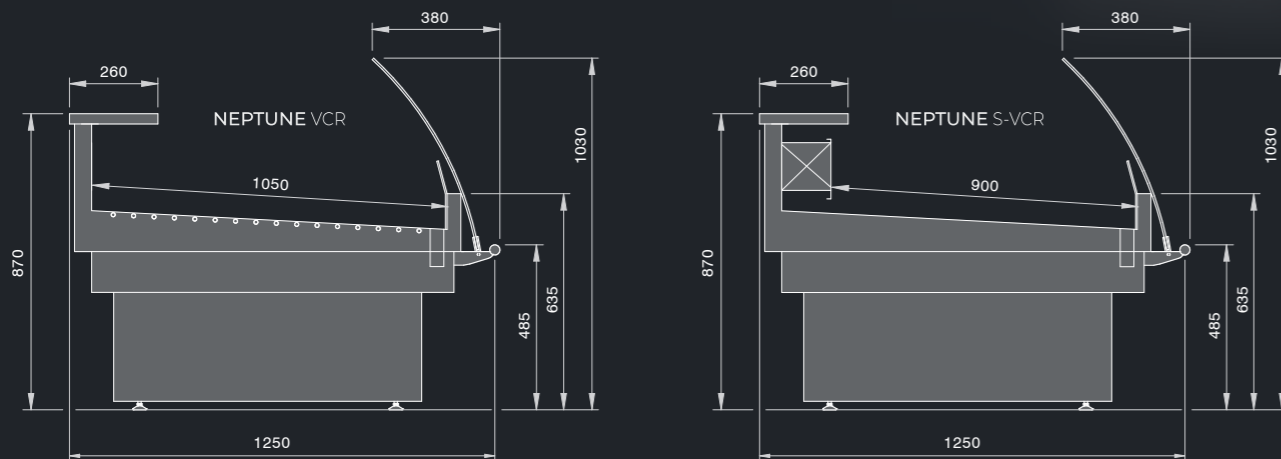
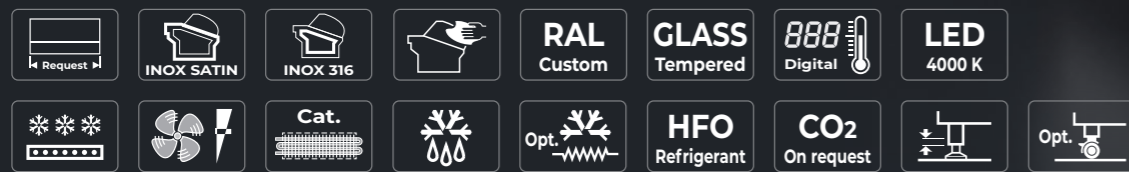
Customisation: **Lengths, section and corner dimensions.**

Can be combined: **Yes.**

Accessories: **A wide range of dedicated accessories is also available.**

Evaporator treatment: **Anti-corrosion cataphoresis** [ventilated and static shellfish version].

Ventilation: **Low-noise fans, IP65 protection class** [ventilated version].



COUNTERS IDEAL FOR DISPLAYING FRESH FISH



-  Lengths on request
-  4000K LED lighting
-  Static refrigeration
-  Satin finish stainless steel exterior
-  LED meat lighting
-  DSV Refrigeration
-  304 stainless steel interior
-  Double glazing on request
-  HFO refrigerant
-  316 stainless steel interior
-  Integrated compressor
-  CO2 refrigerant on request
-  Anti-fog system
-  Adjustable ventilation
-  R290 plug-in refrigerant
-  RAL colours on request
-  Off cycle defrost
-  Height-adjustable feet
-  Easy cleaning
-  Electric defrost
-  Optional castors with brake
-  Tempered glass
-  Optional electric defrost
-  3M1 Temperature class
-  Digital control
-  Anti-corrosion cataphoresis
-  3M2 Temperature class



The images and technical specifications in this brochure are for information purposes only. Emmefri cannot be held responsible for any changes made after the publication of this brochure.

© Copyright 2023 Emmefri all rights reserved

EMMEFRI-02/2023-EN